



DATA CENTER FABRIC

Brocade DCX Integration for Brocade 48000 Customers

Discusses the integration of the Brocade DCX Backbone into existing Brocade Fabric Operating System SAN Infrastructures

BROCADE

CONTENTS

Introduction.....	3
Introducing the Brocade DCX into a B-Series SAN.....	3
Benefits of a Consolidated SAN Design.....	6
The Brocade DCX Inter-Chassis Links.....	7
Summary	8

INTRODUCTION

The Brocade® DCX Backbone is the key building block for extending the reach of today's Storage Area Network (SAN) infrastructures. As IT departments move toward a goal of 100-percent SAN connectivity for server and storage components across the data center, the Brocade DCX empowers IT architects to build a foundation for reaching this goal.

Some of the SAN design elements of the Brocade DCX architecture include:

- Fibre Channel (FC) speed support at 1, 2, 4, 10, and now 8 Gbit/sec
- Option of 16-, 32-, and 48-port, 8 Gbit/sec blades, as well as a 6-port, 10 Gbit/sec blade
- Advanced blade options, such as Fibre Channel Routing (FCR)/Fibre Channel over Internet Protocol (FCIP), and fabric application blades
- Inter-Switch Link (ISL) trunking of 8 x 8 Gbit/sec, for 64 Gbit/sec trunking support
- Dynamic Path Selection (DPS) support
- Brocade DCX-to-DCX connectivity via Inter-Chassis Links (ICLs) at up to 1 Tbit/sec
- Adaptive network services: Quality of Service (QoS) levels, traffic isolation, ingress rate limiting, and "Top Talkers" (a flow-based performance tool)
- Seamless connectivity to existing Brocade Fabric OS® (FOS) SAN infrastructures

Interoperability with existing Brocade M-Enterprise (M-EOS) SAN infrastructures

As the key building block for the next generation of SAN infrastructures, the Brocade DCX will support new advanced technologies, including:

- SAN fabric encryption
- Future SAN protocols, for example, Fibre Channel over Ethernet (FcoE)
- FC Routing and partitioning on a per-port basis across the entire fabric

INTRODUCING THE BROCADE DCX INTO A FOS SAN

Taking into consideration the architectural features of the Brocade DCX Backbone, this section examines the impact of introducing this next-generation platform into an existing FOS SAN infrastructure.

It is important to understand that the Brocade DCX represents a next step for the traditional Brocade FOS SAN architecture. It is powered by a next-generation ASIC family, which introduces new features and also extends current features found in Brocade 4 Gbit/sec FOS SAN switching technology. It will be blade compatible with the Brocade 48000 Director running FOS and will allow current Brocade 48000 customers to take advantage of new 8 Gbit/sec blades and new features of the next-generation ASIC. Finally, it will be powered by Brocade Fabric OS, and although it will introduce new features, it will continue to extend current FOS features. The Brocade DCX represents a seamless transition to extend a FOS SAN infrastructure.

As SAN designs have evolved from 1 Gbit/sec through 4 Gbit/sec and now 8 Gbit/sec, introducing next-generation technology (such as the Brocade DCX) has followed a pattern. To understand this pattern, it is useful to review some of the common methodologies of current SAN design.

Most SAN designs use a variant of what is known as a “core-to-edge” network design. In this design the network elements, typically switches, are designated as either core or edge switches. The edge switches connect end node devices, and the core switches connect edge switches. For this reason, core switches are sometimes called “backbone” switches. The benefits of using this design become clear in situations in which there is rapid growth of the network infrastructure. The core-to-edge network presents a very powerful design to address scalability.

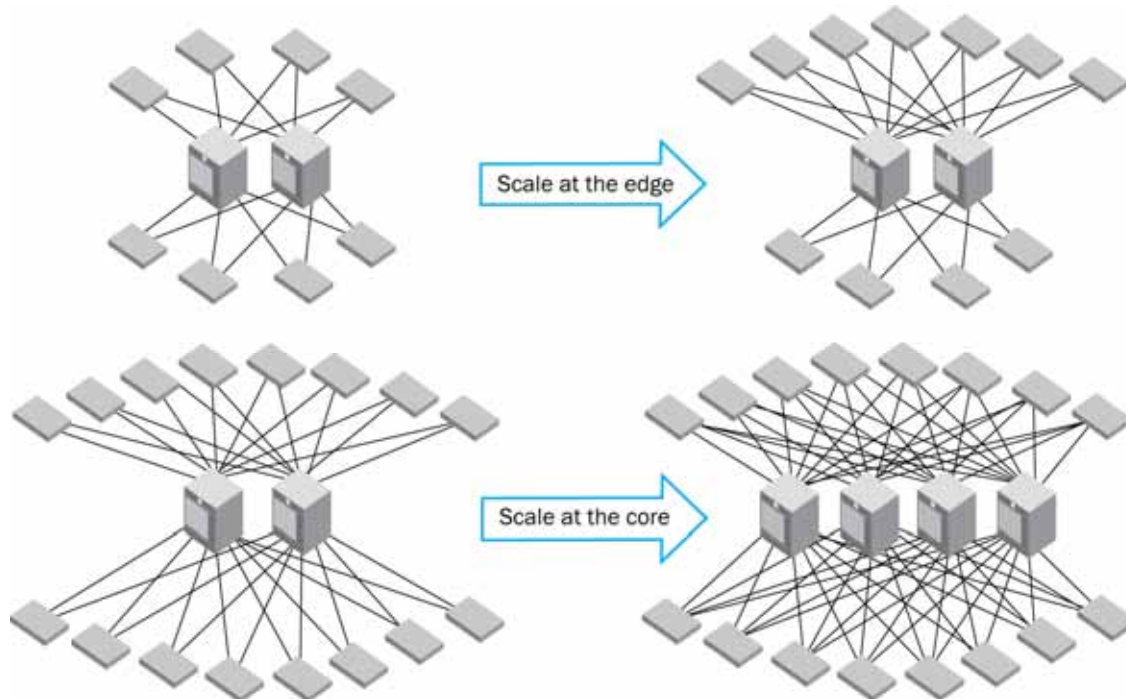


Figure 1. Comparison of scaling at the edge and at the core

As Figure 1 illustrates, scaling the core-to-edge network design can be done very flexibly. Most SAN designs incorporate aspects of core-to-edge network design, with one very common variant: they use the core switches in a hybrid core/edge mode. Specifically, they use edge switches for server connections, allowing many servers to be funneled into the core of the network, and the core switches to both connect the edge switches and to connect directly to storage devices. This use of a core switch for edge duty is appropriate for nodes that have a one-to-many relationship in the network, such as storage elements.

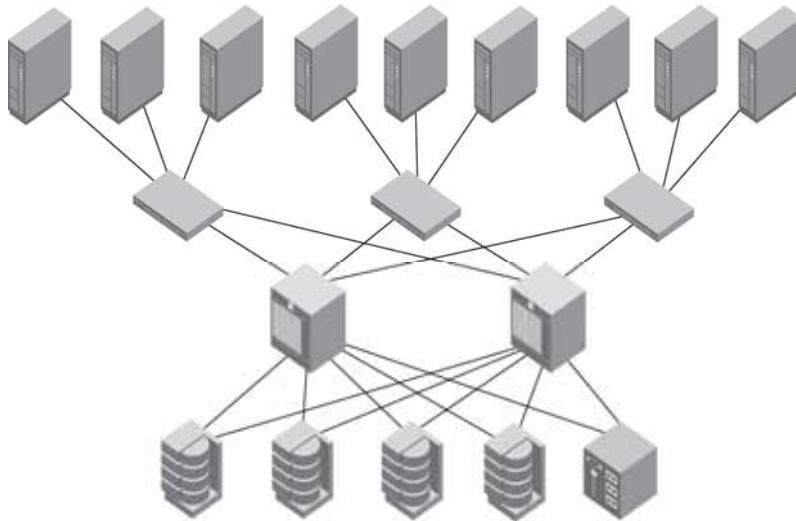


Figure 2. A common SAN core-edge design

Since most SAN communications occur between servers and storage elements, the SAN design must provide the proper bandwidth to funnel communications for all of the server connections through to the storage elements. As shown in Figure 2, edge switches typically connect many servers on the edge and then concentrate connections back to the core switches over fewer ISLs. Even though Brocade switches provide trunking and DPS technologies to make high-speed, switch-to-switch connections on the 4 Gbit/sec switches and next-generation switches, most SAN designs purposely incorporate oversubscription for the edge-to-core switch ISLs, based on the load demand of the servers.

The Brocade DCX technology can enable the next enterprise-class SAN design by providing a higher speed and a denser fabric core, with a denser concentration of both server and storage, connections to the fabric. Similar to design decisions SAN architects made as Fibre Channel speeds moved from 2 Gbit/sec to 4 Gbit/sec, the transition from 4 Gbit/sec to 8 Gbit/sec will allow a current FOS SAN infrastructure to use the Brocade DCX at the core of the fabric and propagate the Brocade 48000 Director toward the edge, as shown in Figure 3.

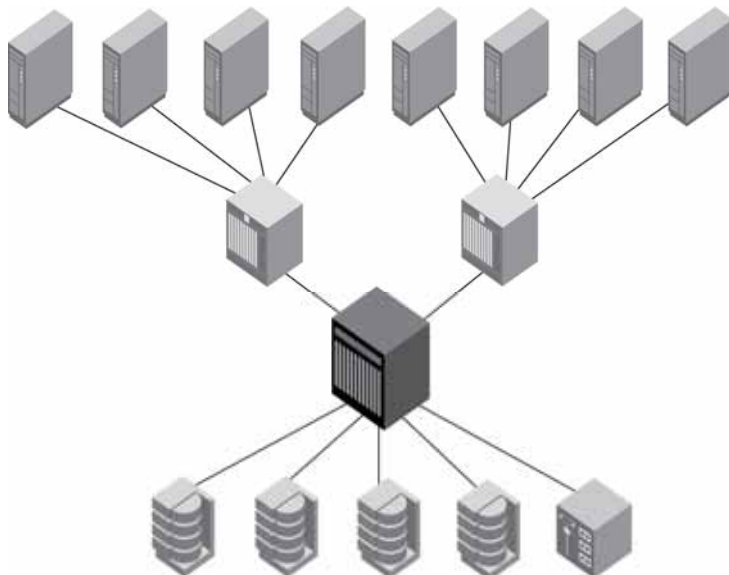


Figure 3. Consolidating with the Brocade DCX at the core and Brocade 48000s toward the edge

BENEFITS OF A CONSOLIDATED SAN DESIGN

The benefits of this consolidated SAN design include:

- Ease of management by reducing the number of SAN switch elements in the fabric
- Collapse of the SAN design requiring fewer ISLs, as well as fewer optics for ISLs
- Improved availability characteristics for the SAN, as all platforms maintain the highest High Availability (HA) levels
- Improved environmental efficiencies, as the edge Brocade 48000 provides more connectivity with lower power and cooling profiles than the equivalent number of edge switches
- Improved data center space efficiencies, as the edge Brocade 48000 provides more connectivity with decreased space requirements than the equivalent number of edge switches
- Brocade DCX technology enabled at the core/storage edge of the SAN design, where bandwidth demands are typically greater

With this architecture in place, future innovation, such as encryption, embedded fabric services, and next-generation protocols in the data center fabric, can be implemented without a fabric redesign, since the Brocade DCX is performing core/storage edge duty. Additionally, Brocade DCX 8 Gbit/sec FC blades are backward compatible with the Brocade 48000 Director. This allows SLs between the Brocade 48000 and the Brocade DCX in this and other SAN designs to take advantage of the 8 Gbit/sec FC speeds.

As more of the server and storage infrastructure is incorporated into the enterprise SAN using enterprise-class SAN switch elements, the SAN design scales to enable the 100 percent server and storage connectivity. Extending the SAN design to incorporate more enterprise-class switch elements at both core and edge can easily be achieved. As a result, the overall reach of the SAN infrastructure is extended, as shown in Figure 4.

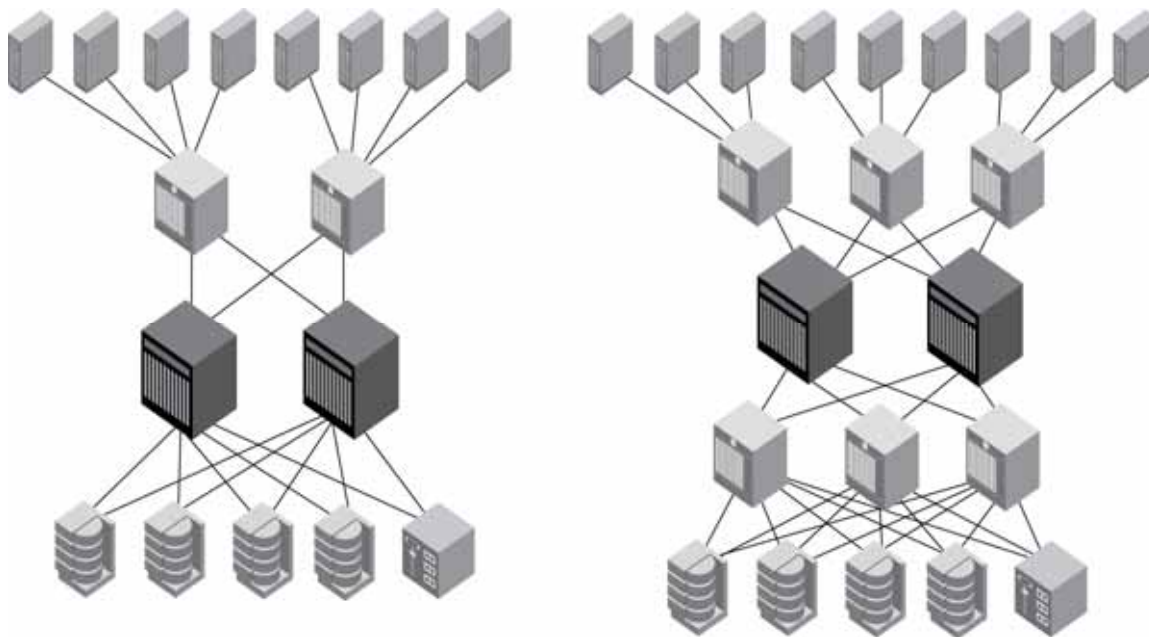


Figure 4. Examples of large-scale SAN designs using the Brocade DCX

This combination of the Brocade 48000 with the Brocade DCX in a SAN design, utilizing an advanced director blade technology, is very flexible. Both platforms can provide support for FCR/FCIP, FC FastWrite, or fabric application services—as long as there is an empty slot to accommodate the required blade.

As data center consolidation projects pick up speed, there may be situations in which a new SAN architecture is developed for the consolidated data center, and none of the existing Brocade 48000 Directors can be included in the design. If this is the case, replacing one or more Brocade 48000 Directors with the Brocade DCX Backbone may make sense. Or it may make sense until the previous Brocade 48000 SAN infrastructure can be taken offline and re-purposed in the new data center. Additionally, there may be other incentives for consolidating an existing FOS SAN infrastructure into a next-generation data center fabric architecture.

THE BROCADE DCX INTER-CHASSIS LINKS

The Brocade DCX provides a new feature for linking two Brocade DCX chassis together, which can be a benefit when a new SAN design or a consolidated SAN design is being considered. Inter-Chassis Links connect two Brocade DCX Backbones together with special ICL cables connected to dedicated ICL ports. This eliminates the need to link chassis via standard ISL cabling and the requisite SFPs, and you do not need to take up other FC ports to link the chassis. Two linked Brocade DCX Backbones, with 768 8 Gbit/sec ports and 512 Gbit/sec ICL links, as shown in Figure 5, can replace a significant amount of current infrastructure.

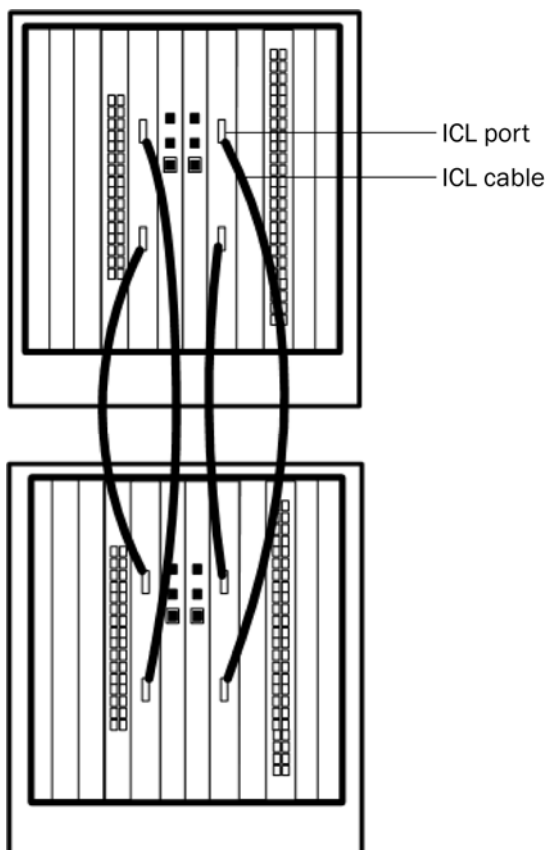


Figure 5. Brocade DCX Backbones linked using special ICL cables and ICL ports

SUMMARY

The Brocade DCX Backbone enterprise-class platform is built to enable the next generation of enterprise SAN infrastructures. With its high-speed technology and high port density, it is the ideal building block for the enterprise SAN and will enable IT architects to design SAN infrastructures that achieve 100-percent connectivity of server and storage elements. Because of its technology, the Brocade DCX seamlessly extends existing Brocade FOS SAN infrastructures. It will provide existing Brocade 48000 SAN infrastructures with benefits in future proofing, scalability, availability, environmental efficiencies, as well as investment protection. It is the logical next step in designing the data center fabric of tomorrow.

© 2008 Brocade Communications Systems, Inc. All Rights Reserved. 03/08 GA-TB-066-01

Brocade, Fabric OS, File Lifecycle Manager, MyView, and StorageX are registered trademarks and the Brocade B-wing symbol, DCX, and SAN Health are trademarks of Brocade Communications Systems, Inc., in the United States and/or in other countries. All other brands, products, or service names are or may be trademarks or service marks of, and are used to identify, products or services of their respective owners.

Notice: This document is for informational purposes only and does not set forth any warranty, expressed or implied, concerning any equipment, equipment feature, or service offered or to be offered by Brocade. Brocade reserves the right to make changes to this document at any time, without notice, and assumes no responsibility for its use. This informational document describes features that may not be currently available. Contact a Brocade sales office for information on feature and product availability. Export of technical data contained in this document may require an export license from the United States government.